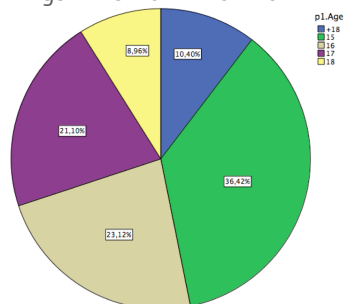
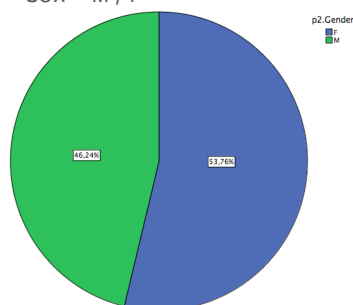


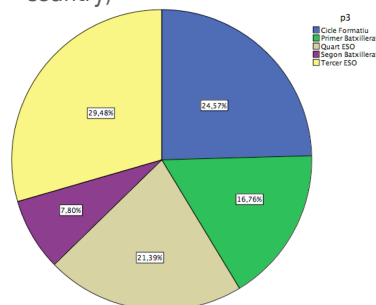
1. Age - 15 16 17 18 +18



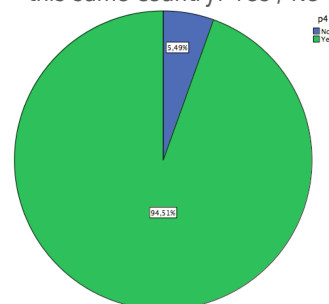
2. Sex - M / F



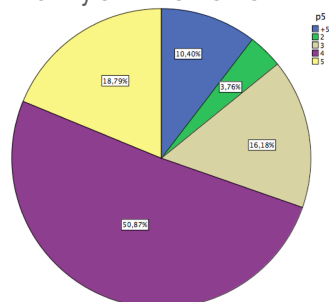
3. School year - (it will depend on each country)



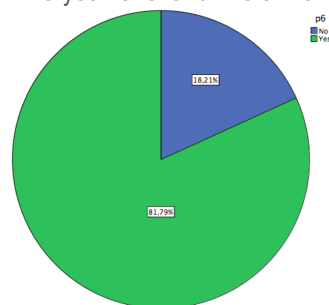
4. Did you do the primary school courses in this same country? Yes / No



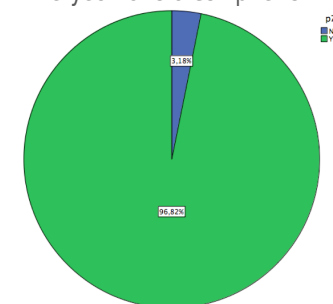
5. How many people belong in your main family unit? 2 3 4 5 +5



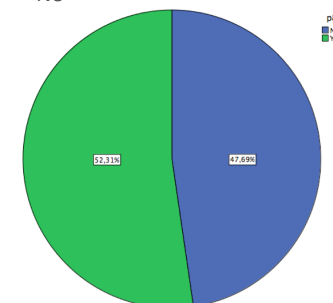
6. Do you have land line at home? Yes / No



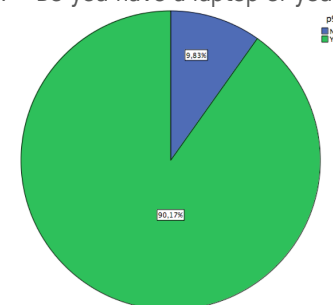
7. Do you have a cell phone? Yes / No



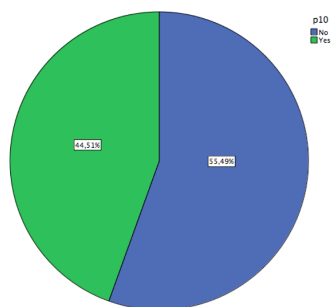
8. Do you have a desktop of your own? Yes / No



9. Do you have a laptop of your own? Yes / No

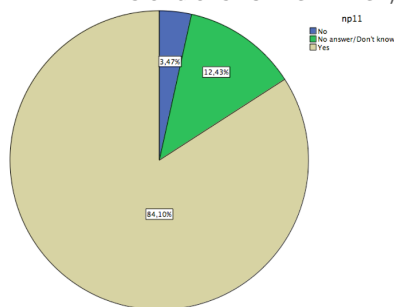


10. Do you have a tablet of your own? Yes / No



11. Do you like ICT tools?

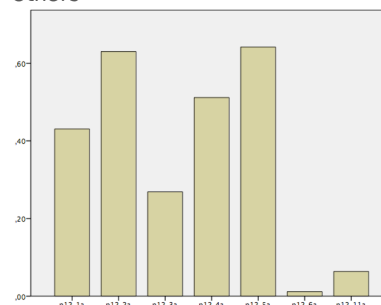
- a) Yes (if you choose this option, answer question 12 and then skip to question 14)
- b) No (if you choose this option, answer question 13 and keep on answering from question 14)
- c) No answer/Don't know (if you choose this option, skip question 13 and answer from 14 on)



12. If you have answered Yes above, why is it so? (choose all the options that apply)

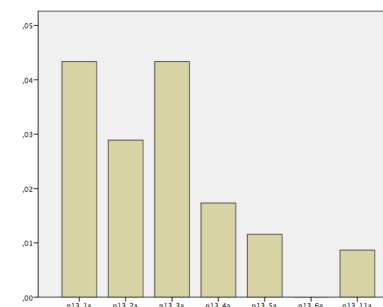
- a) They are important for my school education
- b) They keep me up to date

- c) They increase my productivity when studying
- d) They are useful to keep a better relationship with people
- e) I get to be more informed about things.
- f) Others



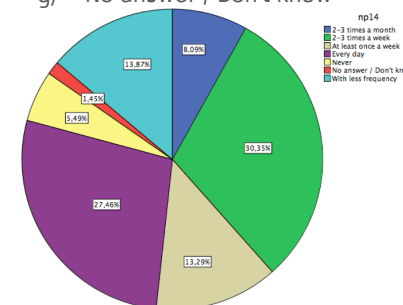
13. If you have answered 'No' in question 11, why not? (choose all the options that apply)

- a) They distract me in my school education
- b) They interfere with my privacy
- c) They decrease my productivity when studying
- d) I get information overload
- e) They can cause harassment situations
- f) Others



14. Frequency of use of your cell phone to phone (using the phone line):

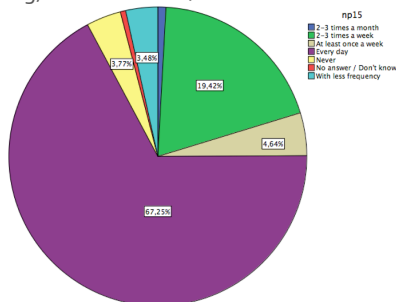
- a) Every day
- b) 2-3 times a week
- c) At least once a week
- d) 2-3 times a month
- e) With less frequency
- f) Never
- g) No answer / Don't know



15. Frequency of use of your cell phone to search on the Internet (Google, newspapers, websites), without taking into account social networks:

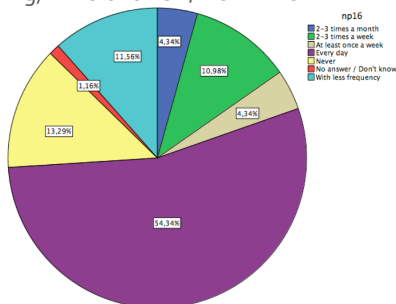
- a) Every day
- b) 2-3 times a week
- c) At least once a week

- d) 2-3 times a month  
e) With less frequency  
f) Never  
g) No answer / Don't know



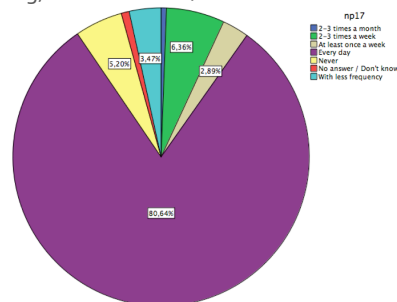
16. Frequency of use of your cell phone to make free phone calls or videocalls (via programs like Whatsapp, Viber, Skype):

- a) Every day  
b) 2-3 times a week  
c) At least once a week  
d) 2-3 times a month  
e) With less frequency  
f) Never  
g) No answer / Don't know



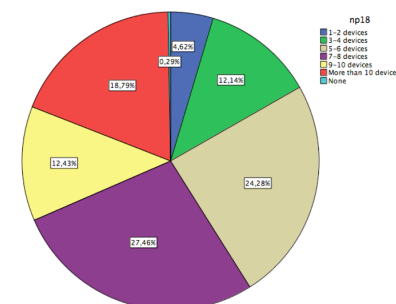
17. Frequency of use of your cell phone to connect onto social networks (for example Facebook, Twitter, Instagram...):

- a) Every day  
b) 2-3 times a week  
c) At least once a week  
d) 2-3 times a month  
e) With less frequency  
f) Never  
g) No answer / Don't know

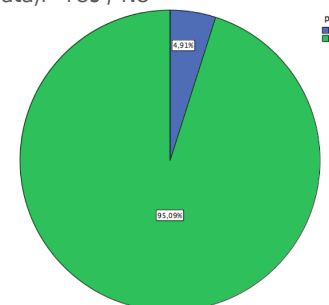


18. How many devices does your main family unit have taking into account desktops, laptops, cell phones and tablets??

- a) None  
b) 1-2 devices  
c) 3-4 devices  
d) 5-6 devices  
e) 7-8 devices  
f) 9-10 devices  
g) More than 10 devices

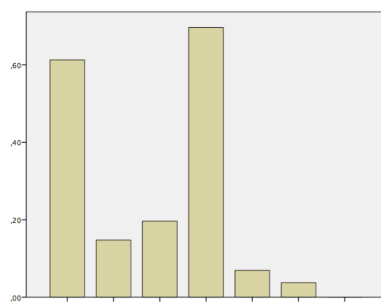


19. Do you have Internet connection at home (without taking into account your mobile data)? Yes / No



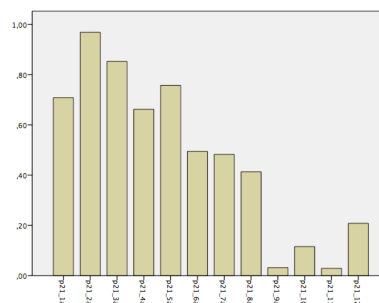
20. What type of Internet connection do you have? (select all the options that apply to your context).

- a) ADSL  
b) Cable  
c) Telephone line through cable  
d) Wifi  
e) Other systems  
f) No answer / Don't know



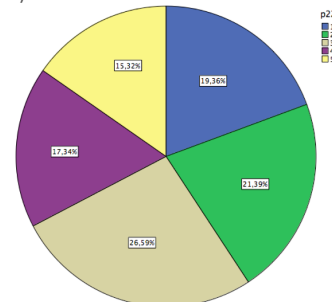
21. What services do you use when you go online? (select all those that apply to your context).

- Instant messaging (like Messenger).
- Listening to music or watching videos online
- Searching for information for study or work purposes
- Send/Receive e-mails
- Downloading files
- Searching for information for entertainment purposes
- Playing videogames online
- Accessing the media (press, radio or TV)
- Participating in blogs
- Chatting on webcams
- Participating in forums
- Online shopping

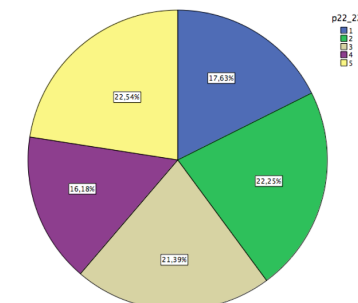


22. Classify from 1 to 5 the following audiovisual devices according to the amount of time you use them daily, taking into account that 5 is the most used and 1 the least used. If you don't have this device or if you never use it, mark it with 0.

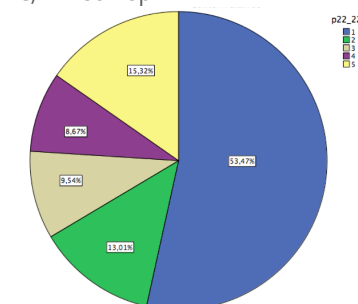
a) Television



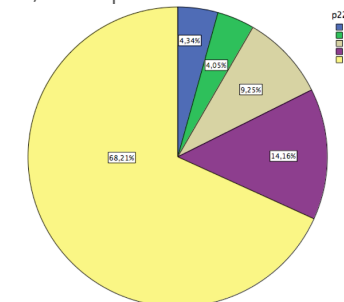
b) Laptop



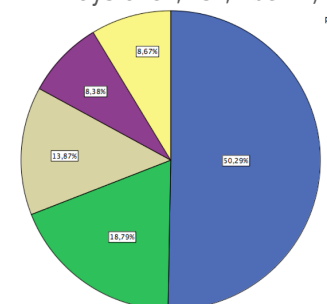
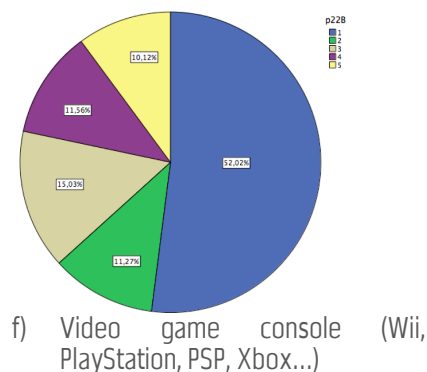
c) Desktop



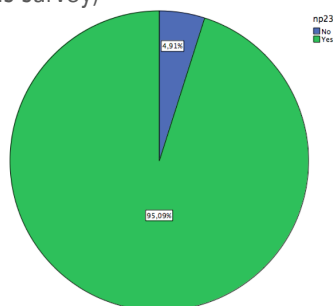
d) Cell phone



e) Tablet

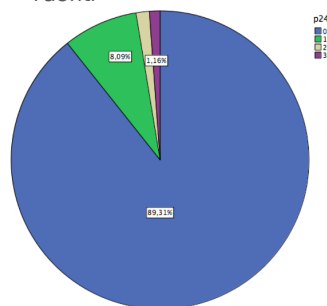


23. Do you participate in social networks? Yes / No (if your answer is 'No', go to Section III in this survey)

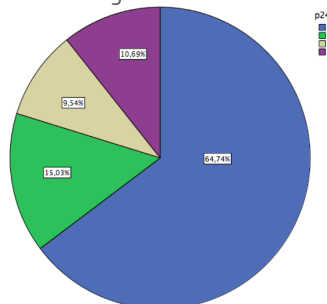


24. Classify the following social networks according to the use you make of them, taking into account that 3 is a regular use, 2 is an occasional use and 1 is a residual use. If you don't know or you don't use any of the following networks, mark it with 0.

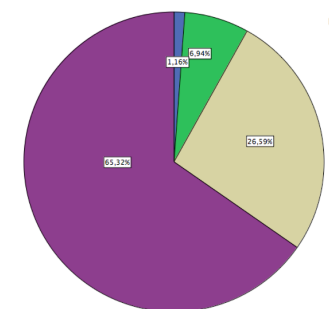
a) Tuenti



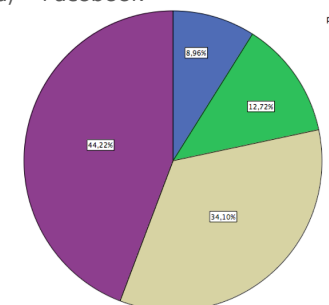
b) Messenger



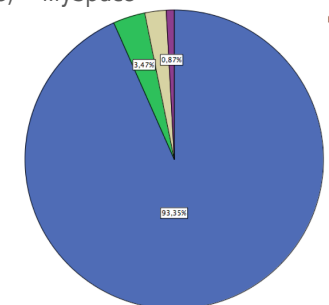
c) YouTube



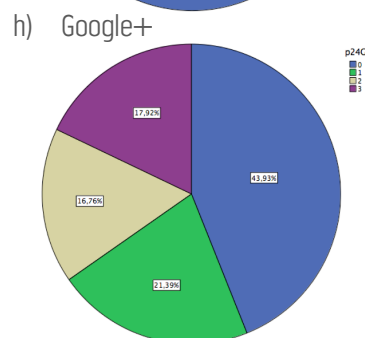
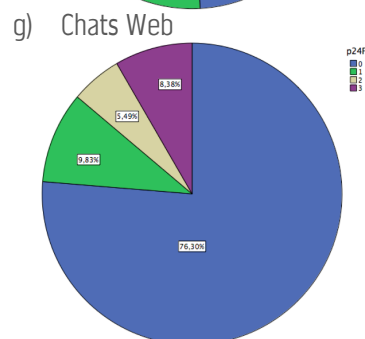
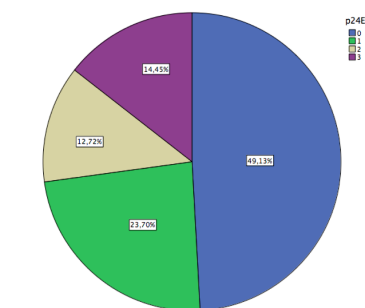
d) Facebook



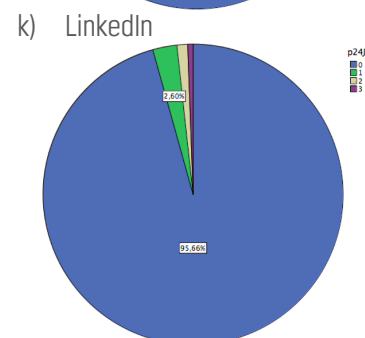
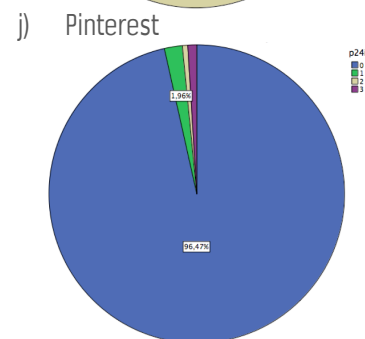
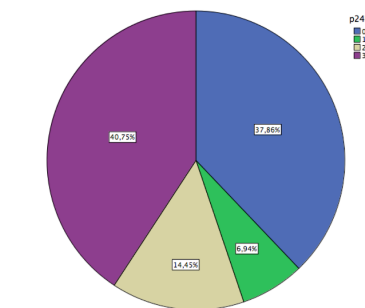
e) MySpace



f) Twitter



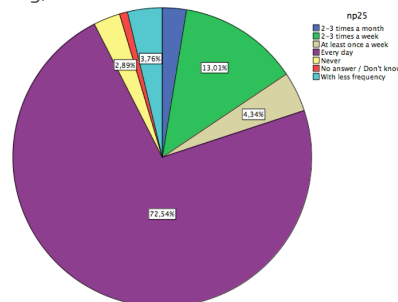
i) Snapchat



25. How often do you participate in social networks?

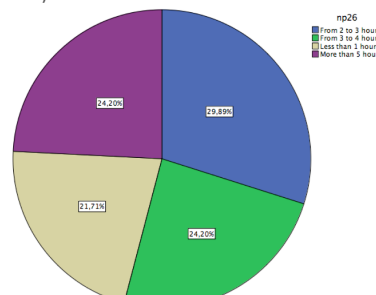
- a) Every day
- b) 2-3 times a week

- c) At least once a week
- d) 2-3 times a month
- e) With less frequency
- f) Never
- g) No answer / Don't know



26. If you have answered 'Every day' in the question above, how many hours a day, approximately, do you use social networks?

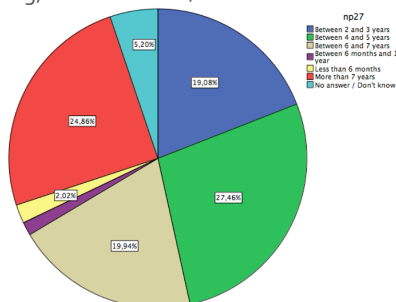
- a) Less than 1 hour
- b) From 2 to 3 hours
- c) From 3 to 4 hours
- d) More than 5 hours



27. How long have you been using social networks?

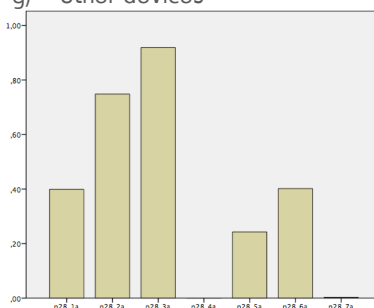
- a) Less than 6 months
- b) Between 6 months and 1 year

- c) Between 2 and 3 years
- d) Between 4 and 5 years
- e) Between 6 and 7 years
- f) More than 7 years
- g) No answer / Don't know



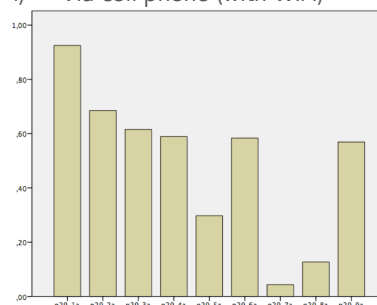
28. Which device do you use to access social networks? (select all those that apply)

- a) Desktop
- b) Laptop
- c) Cell phone
- d) Video games console
- e) TV
- f) Tablet
- g) Other devices



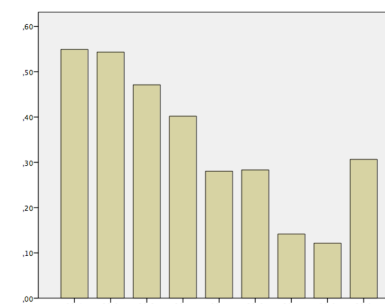
29. Choose the places where you are when participating in social networks via WIFI (that is, not using the 'mobile data').

- a) Home
- b) Friends' house
- c) Relatives' house
- d) School
- e) Public library
- f) Public spaces with WIFI
- g) Cybercenters (paying)
- h) Work place
- i) Via cell phone (with WIFI)



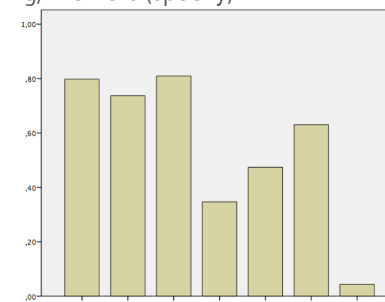
30. Choose the places where you are when participating in social networks when getting online using mobile data (that is, not using WIFI).

- a) Home
- b) Friends' house
- c) Relatives' house
- d) School
- e) Public library
- f) Public spaces with WIFI
- g) Cybercenters (paying)
- h) Work place
- i) Via cell phone (with WIFI)



31. You use these social networks to... (choose the ones that apply):

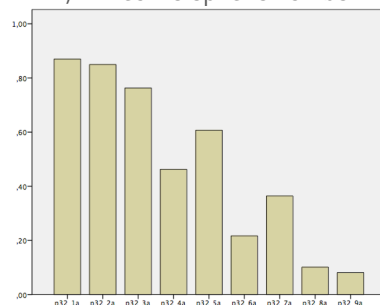
- a) Be in contact with friends you see frequently
- b) Be in touch with friends you rarely see in person
- c) Make plans with friends
- d) Make new friends
- e) As a space to talk about private topics with your friends
- f) Be updated and know what is going on in my friends' life
- g) Others (specify):



32. What type of personal data do you provide in order to sign up onto social networks?

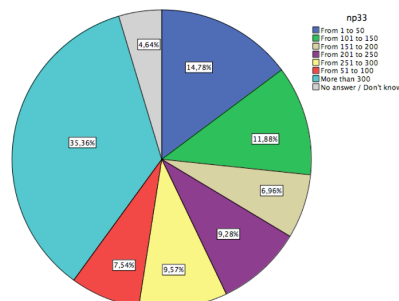
- a) If you are a boy or a girl

- b) Your name
- c) Your age
- d) Your hometown
- e) Your e-mail address
- f) Your school / university
- g) Your likes and dislikes
- h) Your postal address
- i) Your telephone number



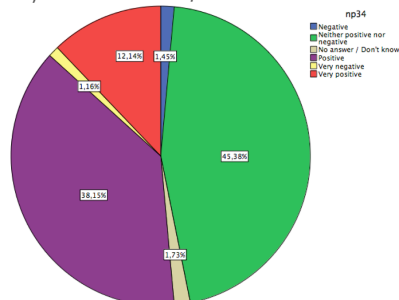
33. How many contacts or friends do you have in the social network you use the most?

- a) From 1 to 50
- b) From 51 to 100
- c) From 101 to 150
- d) From 151 to 200
- e) From 201 to 250
- f) From 251 to 300
- g) More than 300
- h) No answer / Don't know



34. What's your opinion about social networks?

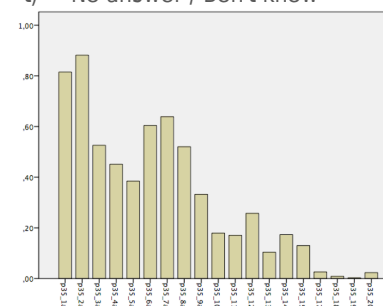
- a) Very positive
- b) Positive
- c) Neither positive nor negative
- d) Negative
- e) Very negative
- f) No answer / Don't know



35. What are the main reasons why you value social networks positively? (Choose all the options that apply to your opinion)

- a) Speaking
- b) Being in touch with friends
- c) It is useful to establish relations and communicate with people better

- d) Meeting new people
- e) Making new friends
- f) You don't spend money
- g) You don't need to pay to communicate
- h) Speaking with people you don't usually see
- i) It's fun, entertaining
- j) Sharing
- k) Exchanging pictures
- l) It's easy and fast to use
- m) It's useful to arrange meetings in person with people
- n) Making arrangements
- o) Being able to be informed
- p) Being able to chat with relatives
- q) Chats are private
- r) It's reliable. It's easier to speak.
- s) Others
- t) No answer / Don't know

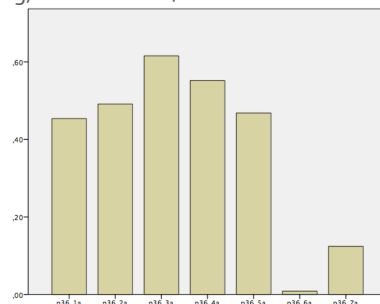


36. What are the main reasons why you value social networks negatively? Choose the options that match your opinion:

- a) Harassment online from mates or acquaintances

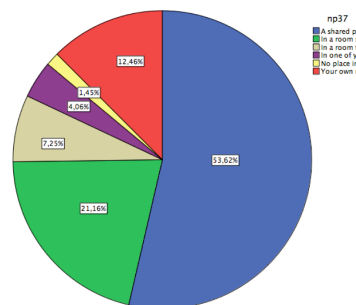


- b) The use of my data with negative purposes
- c) Problems with privacy
- d) Decrease in productivity when studying
- e) Access to inappropriate contents
- f) Others
- g) No answer/Don't know

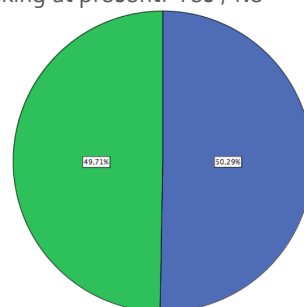


37. The room in your house where you use the computer the most is:

- a) Your own room, not shared
- b) A shared place in the house, such as the living room
- c) In a room to play, study or to use the computer
- d) In a room shared with a brother/sister
- e) In one of your brothers' or sisters' room
- f) In your parents' room.
- g) No place in particular



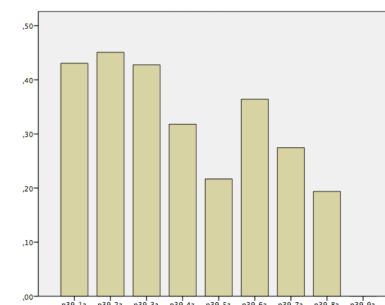
38. Do you think participating in social networks has a positive effect in the studies you are taking at present? Yes / No



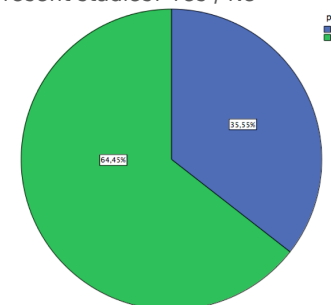
39. If you have answered 'Yes' in the previous question, what are the benefits?

- a) Checking information to study
- b) Contacting classmates
- c) Checking information about class work and/or exams
- d) Sharing information to study
- e) Obtaining information about your school
- f) Accessing the information you need fast

- g) Broadening my knowledge in general
- h) Being able to help my classmates
- i) Others



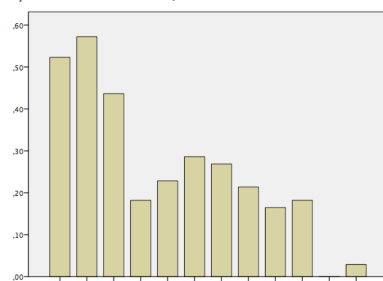
40. Do you think that participating in social networks has a negative effect in your present studies? Yes / No



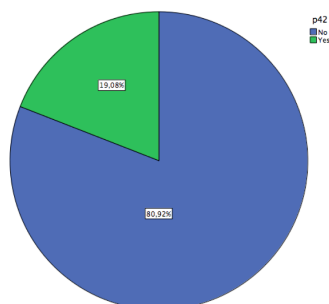
41. If your answer to the previous question is 'Yes', what do you think are the negative effects?

- a) Spending much time (instead of spending it studying)
- b) Distraction / concentration loss
- c) Addiction /Be hooked on them

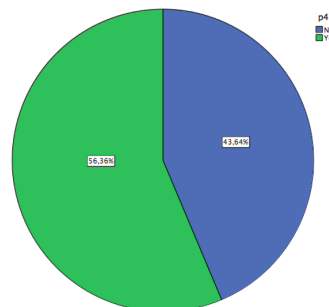
- d) Visiting inappropriate pages
- e) Meeting inappropriate people
- f) Possible dangers because of giving out too much personal data
- g) Orthography problems
- h) Getting your computer infected with a virus
- i) Isolation
- j) Possible tricks
- k) Others
- l) No answer/Don't know



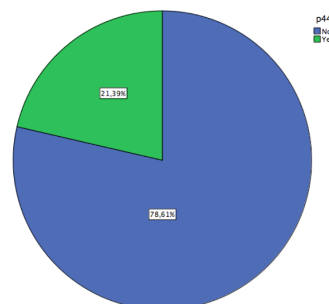
42. Have you ever felt harassed in social networks? Yes / No



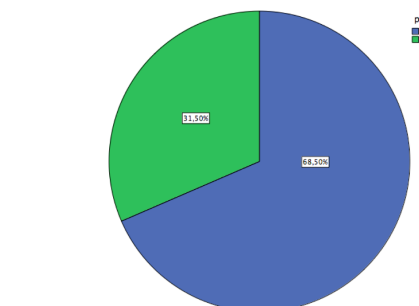
43. Do you know any classmate who has felt harassed in social networks? Yes / No



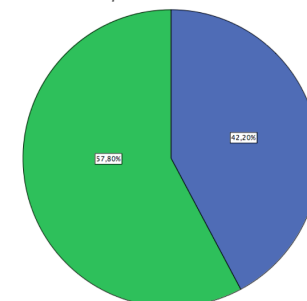
44. Have you ever met in person someone who you have met in chats or social networks? Yes / No



45. Do you visit pages with sexual content? Yes / No



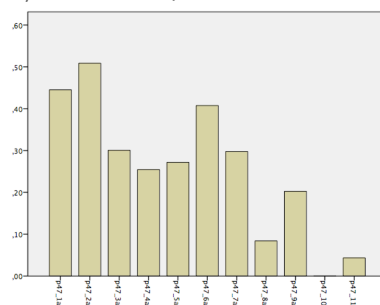
46. Do you think that participating in social networks has a positive effect in the family relations with the relatives living in your house? Yes / No



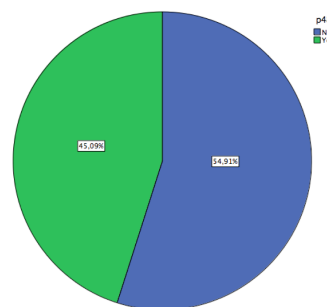
47. If in the former question your answer is 'Yes', what are those positive effects for you?

- a) Keeping in touch with your family (so that it doesn't get broken)
- b) Being able to communicate with relatives living far away
- c) Improving/ making the communication between relatives better

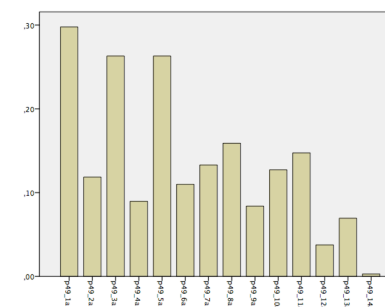
- d) Searching for useful information for the family
- e) Sharing entertainment with other relatives
- f) Being in touch with your family while on a trip
- g) Sharing information with other relatives
- h) Improving the relationship between parents and children
- i) Showing new things to your family
- j) Others
- k) No answer/Don't know



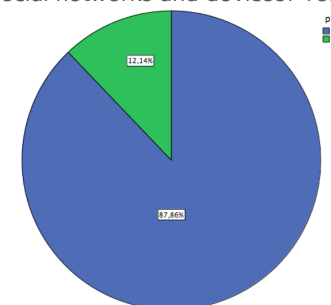
48. Do you think participating in social networks has a negative effect on the family relationships with the relatives living in your house? Yes / No



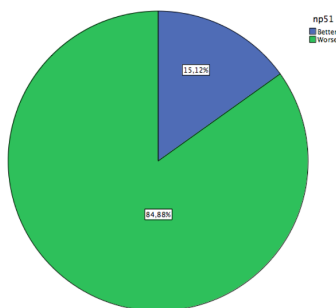
49. If in the former question your answer is 'Yes', what are those negative effects for you?
- a) Wrong interpretations, misunderstandings, arguments
  - b) Exposing my family on the net through pictures
  - c) Losing personal contact / isolation
  - d) Threats / Harassment
  - e) Addiction
  - f) Some inappropriate conversations arise
  - g) Making your personal data public
  - h) Communication impoverishment
  - i) Contacting with inappropriate people
  - j) Bad influences
  - k) It's a waste of time
  - l) Access to undesirable information / Inappropriate pages
  - m) Tricks / It's dangerous
  - n) Others



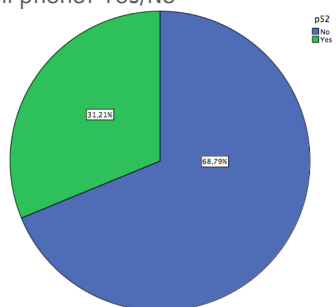
50. Generally speaking, do you think that your parents have the same level of knowledge as you regarding the Internet, applications, social networks and devices? Yes / No



51. If your answer to the previous question is 'No', do you think their level is better or worse than yours? Better / Worse

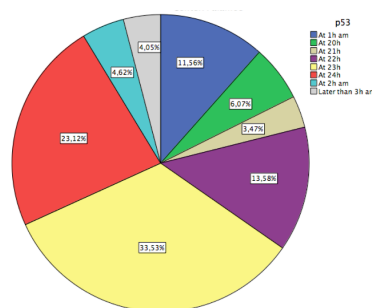


52. When you go to bed, do you disconnect your cell phone? Yes/No

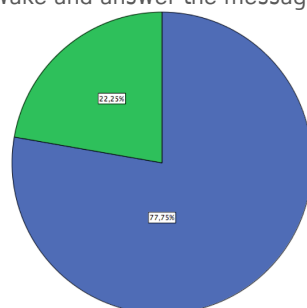


53. What time do you usually stop being connected on the Internet?

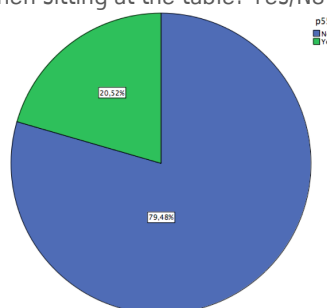
- At 20h
- At 21h
- At 22h
- At 23h
- At 24h
- At 1h am
- At 2h am
- Later than 3h am



54. If you receive a notification on your cell phone when you are sleeping, you are awake and answer the message? Yes / No

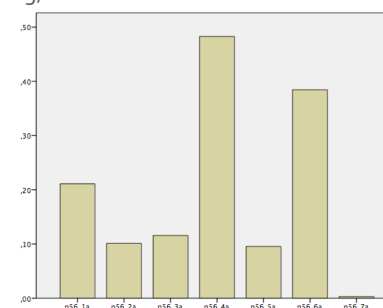


55. When you are having either lunch or dinner with the family, do you use your cell phone when sitting at the table? Yes/No

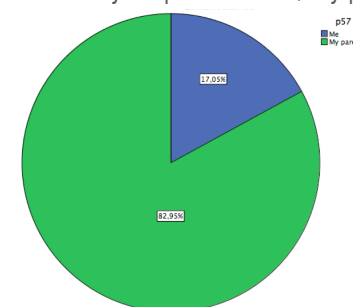


56. Choose one device from the list below that you could not live without for longer than one day:

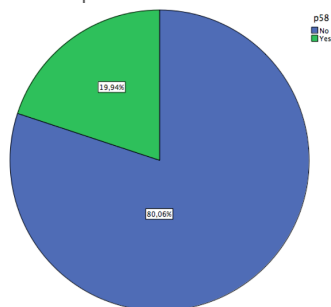
- Laptop
- Computer
- Tablet
- Mobile phone
- Game console (Wii, PlayStation, PSP, Xbox...)
- I can stay a whole day without them
- Others



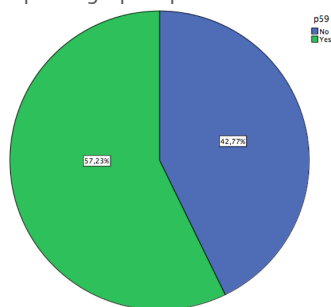
57. Do you pay the bill of your cell phone yourself or your parents? Me / My parents



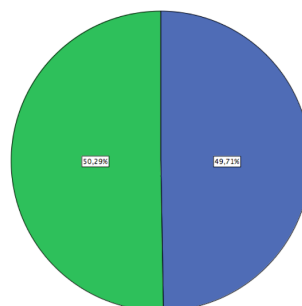
58. Have you ever downloaded or sent violent videos or pictures? Yes / No



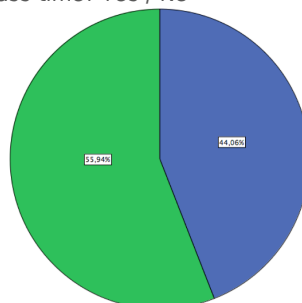
59. Have you ever sent or received any pornographic pictures or videos? Yes / No



60. In your school, do you use a laptop as a tool to follow the classes? Yes / No



61. If you have a cell phone, do you use it during class time? Yes / No

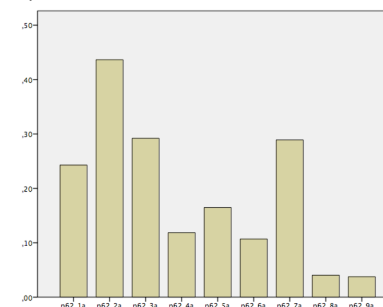


62. If your answer to the previous question is yes, choose why you use it:

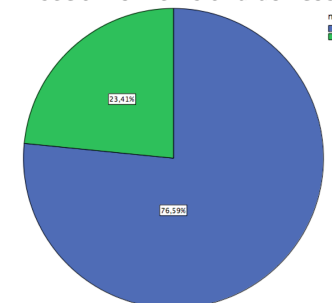
- Speak/Chat with classmates
- Speak/Chat with friends that are not in the classroom at that same moment
- Speak/Chat with relatives
- Upload pictures or videos onto social networks
- Play games that are on the phone
- Play online games
- Surf the Internet in general

h) Voice calls

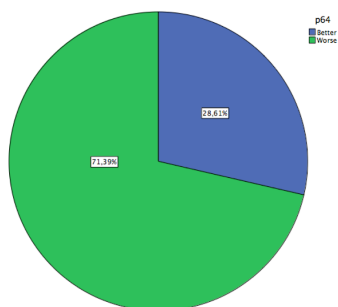
i) Others



63. Generally speaking, do you think your teachers have the same level of knowledge as you regarding the Internet, applications, social networks and devices? Yes / No

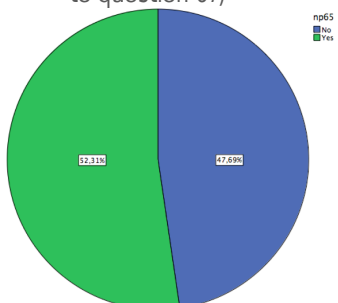


64. If your answer to the former question is 'No', do you think their level is better or worse than yours? Better / Worse



65. Would you like your teachers to integrate social networks as communication and work platforms in the classroom?

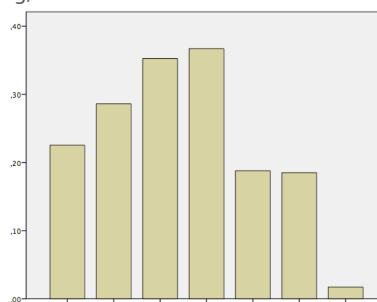
- a) Yes (if you choose this option, answer question 66 and skip to 68)
- b) No (if you choose this option, skip to question 67)



66. If you have answered 'Yes' in the former question, why so? (Choose the three options you consider most important)

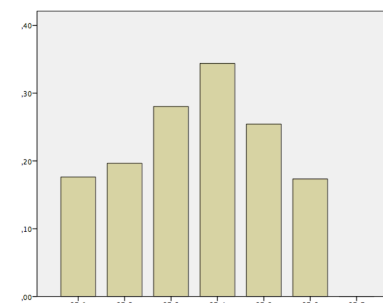
- a) That would improve my academic results
- b) I would understand the subjects better

- c) Contacting the class group at any moment
- d) Contacting the teacher at any moment
- e) I would express my opinions better
- f) I would be more interested in the subjects
- g) Others



67. If you have answered 'No' in question 65, why not? (choose all the options that apply)

- a) Harassment from classmates
- b) Somebody might use my information with negative purposes
- c) Privacy problems
- d) Decrease in productivity in my studies
- e) Not being able to disconnect from the school
- f) That my work increases due to the permanent connection between teacher and classmates
- g) Others



68. Do you think that your school is up to date regarding new technologies (digitalized classrooms, curricular programs that integrate ICT tools, 2.0 communication...)? Yes / No

